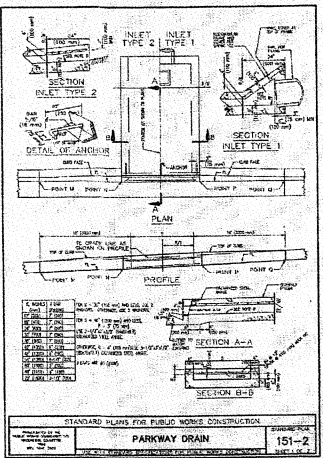
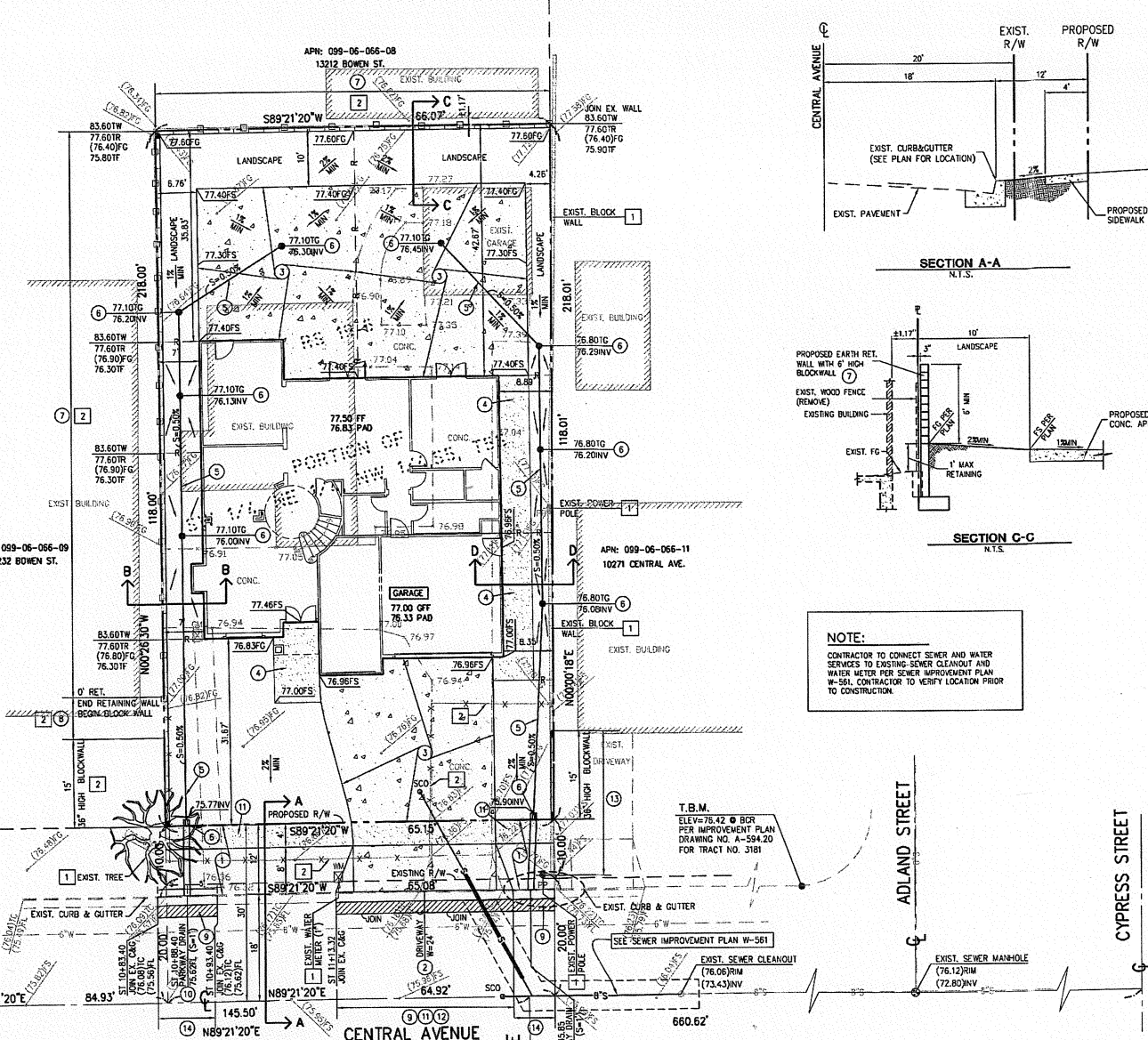


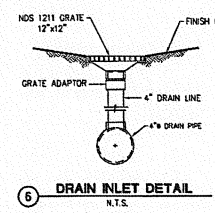
**DETAIL "A"**  
CURB DRAIN DETAIL  
N.T.S.



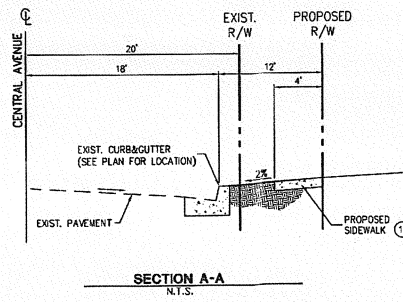
STANDARD PLANS FOR PUBLIC WORKS CONSTRUCTION  
PARKWAY DRAIN 151-2  
PARKING DRAIN 151-2



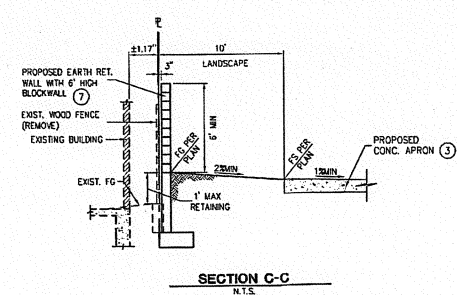
**NOTE:**  
CONTRACTOR TO CONNECT SEWER AND WATER SERVICES TO EXISTING SEWER CLEANOUT AND WATER METER PER SEWER IMPROVEMENT PLAN W-561. CONTRACTOR TO VERIFY LOCATION PRIOR TO CONSTRUCTION.



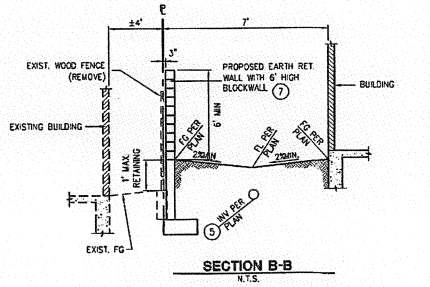
**6** DRAIN INLET DETAIL  
N.T.S.



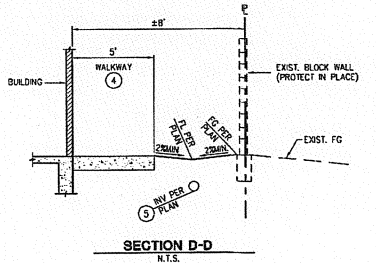
**SECTION A-A**  
N.T.S.



**SECTION C-C**  
N.T.S.



**SECTION B-B**  
N.T.S.



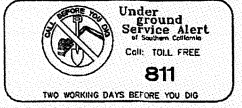
**SECTION D-D**  
N.T.S.

**CONSTRUCTION NOTES**

- 1 REMOVE EXIST. AND CONSTRUCT PROPOSED SECTION "A-A".
- 2 REMOVE EXIST. DRIVEWAY AND CONSTRUCT RESIDENTIAL DRIVEWAY PER CITY OF GARDEN GROVE STD. PLAN B-122.
- 3 CONSTRUCT 6" THICK CONCRETE APRON
- 4 CONSTRUCT 4" THICK CONCRETE WALKWAY
- 5 CONTRACTOR TO CONNECT SEWER AND WATER SERVICES TO EXISTING SEWER CLEANOUT AND WATER METER PER SEWER IMPROVEMENT PLAN W-561. CONTRACTOR TO VERIFY LOCATION PRIOR TO CONSTRUCTION.
- 6 CONSTRUCT 4" PVC DRAIN PIPE.
- 7 CONSTRUCT DRAIN INLET PER DETAIL THIS SHEET.
- 8 CONSTRUCT EARTH RETAINING WALL W/6" HIGH BLOCK WALL (STRUCTURAL CALCS BY OTHERS)
- 9 CONSTRUCT 6" HIGH BLOCK WALL PER CITY OF GARDEN GROVE STD. PLAN B-505.
- 10 CONSTRUCT FULL DEPTH AC (2' WIDE x 1' DEEP)
- 11 CONSTRUCT PARKWAY DRAIN (INLET TYPE 1, S=1) PER APWA STD. PLAN 151-2 (MODIFIED PER DETAIL "A", SEE PLAN FOR LOCATION).
- 12 CONSTRUCT SIDEWALK PER CITY OF GARDEN GROVE STD. PLAN B-105.
- 13 REMOVE EXISTING CURB & GUTTER.
- 14 REMOVE EXISTING BLOCK WALL.
- 15 CONSTRUCT CURB & GUTTER (6"CF) PER CITY OF GARDEN GROVE STD. PLAN B-113 (TYPE D-6)

**DISPOSITION NOTES**

- 1 PROTECT IN PLACE
- 2 REMOVE EXISTING FENCE



**Underground Service Alert**  
of Southern California  
**811**  
Call: TOLL FREE  
TWO WORKING DAYS BEFORE YOU DIG

UNDERGROUND SERVICE ALERT OF SOUTHERN CALIFORNIA

ATTENTION IS DIRECTED TO THE POSSIBLE EXISTENCE OF UNDERGROUND FACILITIES NOT KNOWN OR IN A LOCATION DIFFERENT FROM THAT WHICH IS SHOWN ON THE PLANS OR IN THE SPECIAL PROVISIONS. THE CONTRACTOR SHALL TAKE STEPS TO ASCERTAIN THE EXACT LOCATION OF ALL UNDERGROUND FACILITIES PRIOR TO DOING WORK THAT MAY DAMAGE SUCH FACILITIES OR INTERFERE WITH THEIR SERVICE.

BEFORE EXCAVATING, THE CONTRACTOR SHALL VERIFY THE LOCATION OF UNDERGROUND UTILITIES BY CONTACTING UNDERGROUND SERVICE ALERT AT 811

**NOTE:** TBM ESTABLISHED FROM STREET IMPROVEMENT PLAN DRAWING NO. A-594.20 WHICH PLAN USES THIS BENCHMARK FOR DATUM

**BENCHMARK**  
ELEV: 86.063  
BM NO. GS-G-5-64 (1972 ADA)

STANDARD G.G. CITY BENCHMARK AT THE INTERSECTION OF LAMPSON AVE. AND NUTWOOD ST. IN THE SW QUADRANT, 51.50' S/O C.Y.L. OF LAMPSON AVE. AND 23' N/O NUTWOOD ST., 2.50' W/O CURB FACE.



DESIGNED BY S.D.	DRAWN BY N.C.	CHECKED BY S.D.
PLANS PREPARED UNDER THE SUPERVISION OF SURFENDER DEWAN		
DATE 09/30/15	RCE NO. 34599	

STREET IMPROVEMENT PLAN DRAWING NO. A-594.20				
NO.	DATE	BY	DESCRIPTION	APP'D

PREPARED BY:  
**DMS CONSULTANTS, INC.**  
CIVIL ENGINEERS  
10711 Van Nuys Blvd., Suite 200, Van Nuys, CA 91411  
TEL: (818) 781-1111

OWNER  
[REDACTED]

ARCHITECT  
**NUGEN INC.**  
10321 CALLE INDEPENDENCIA  
FOUNTAIN VALLEY, CA 92708  
TEL: (714) 904-9518

SOILS ENGINEER  
**GEOTECHNICAL INTERNATIONAL  
LAN & ASSOCIATES**  
13139 HARBOR BLVD.  
GARDEN GROVE, CA 92843  
PROJECT NO. G1403047 DATED MARCH 10, 2014

APN: 099-06-066-10  
**CITY OF GARDEN GROVE**  
**PRECISE GRADING PLAN**  
**10261 CENTRAL AVENUE**  
GARDEN GROVE, CA  
DATE: 07/28/14  
SHEET 2 OF 4